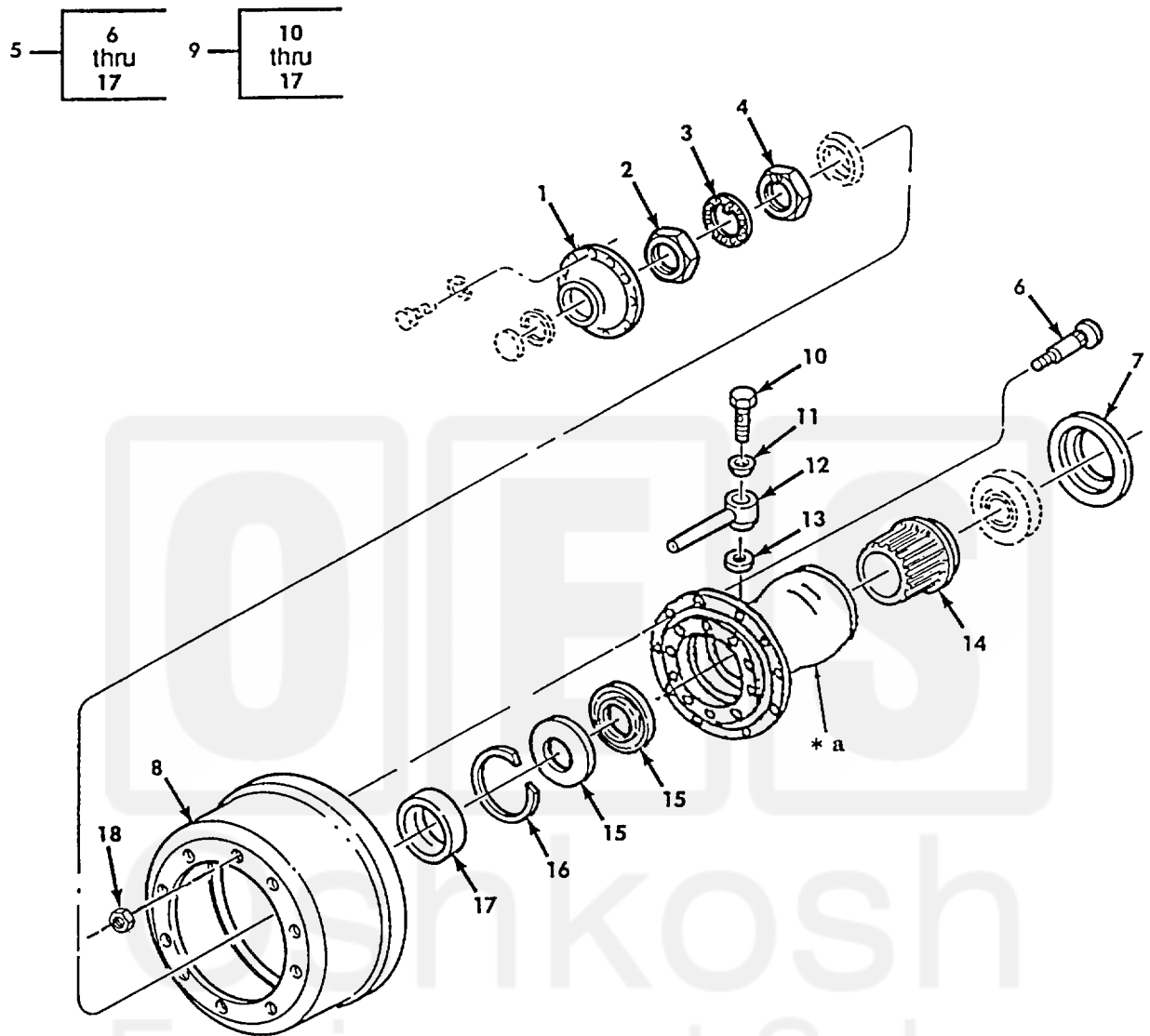


Section II.

TM 9-2320-272-24P-1



* a PART OF ITEM 9

Figure 294. Front Wheel Hub and Drum Assembly (M939A2).

SECTION II					TM 9-2320-272-24P-1	
(1)	(2)	(3)	(4)	(5)	(6)	(7)
ITEM NO	SMR CODE	NSN	CAGEC	PART NUMBER	DESCRIPTION AND USABLE ON CODES (UOC)	QTY
GROUP 1311 WHEEL ASSEMBLY						
FIG. 294 FRONT WHEEL HUB AND DRUM ASSEMBLY(M939A2)						
1	PAOZZ	2530012719809	78500	A-3270-R-1032	FLANGE, DRIVE AXLE UOC:ZAA, ZAB, ZAC, ZAD, ZAE, ZAF, ZAG, ZAH, ZAJ, ZAK, ZAL	2
2	PAOZZ	5310012708425	78500	1227-E-1357	NUT, PLAIN, OCTAGON UOC:ZAA, ZAB, ZAC, ZAD, ZAE, ZAF, ZAG, ZAH, ZAJ, ZAK, ZAL	2
3	PAOZZ	5310003219974	78500	1229-U-1009	WASHER, KEY UOC:ZAA, ZAB, ZAC, ZAD, ZAE, ZAF, ZAG, ZAH, ZAJ, ZAK, ZAL	2
4	PAOZZ	5310012712467	78500	1227-D-1356	NUT, PLAIN, OCTAGON UOC:ZAA, ZAB, ZAC, ZAD, ZAE, ZAF, ZAG, ZAH, ZAJ, ZAK, ZAL	2
5	PAOZZ	2530012828619	78500	A2-333-X-3534	BRAKE DRUM, ASSEMBLY, RIGHT HAND UOC:ZAA, ZAB, ZAC, ZAD, ZAE, ZAF, ZAG, ZAH, ZAJ, ZAK, ZAL	1
5	PAOZZ	2530012842310	78500	A3-333-X-3534	HUB, WHEEL, VEHICULAR, ASSEMBLY, LEFT..... HAND UOC:ZAA, ZAB, ZAC, ZAD, ZAE, ZAF, ZAG, ZAH, ZAJ, ZAK, ZAL	1
6	PAOZZ	5306012715842	78500	20X-1815-Z	.BOLT, RIBBED SHOULDE, LEFT SIDE UOC:ZAA, ZAB, ZAC, ZAD, ZAE, ZAF, ZAG, ZAH, ZAJ, ZAK, ZAL	10
6	PAOZZ	5306012715843	78500	20X-1816-Z	.BOLT, RIBBED SHOULDE, RIGHT SIDE UOC:ZAA, ZAB, ZAC, ZAD, ZAE, ZAF, ZAG, ZAH, ZAJ, ZAK, ZAL	10
7	PAOZZ	5330012719410	01212	4591SCR	.SEAL, PLAIN ENCASED UOC:ZAA, ZAB, ZAC, ZAD, ZAE, ZAF, ZAG, ZAH, ZAJ, ZAK, ZAL	2
8	PAOFF	2530012718023	78500	3219-E-4815	.BRAKE DRUM UOC:ZAA, ZAB, ZAC, ZAD, ZAE, ZAF, ZAG, ZAH, ZAJ, ZAK, ZAL	1
9	PAOZZ	2530012844399	78500	A-333-X-3534	.HUB, WHEEL, VEHICULAR UOC:ZAA, ZAB, ZAC, ZAD, ZAE, ZAF, ZAG, ZAH, ZAJ, ZAK, ZAL	1
10	PAOZZ	5305012716450	78500	2206-W-1011	..SCREW, CAP, HEXAGON H UOC:ZAA, ZAB, ZAC, ZAD, ZAE, ZAF, ZAG, ZAH, ZAJ, ZAK, ZAL	1
11	PAOZZ	4730012720582	78500	2297-N-5630	..SEAL, CONICAL, FLARED UOC:ZAA, ZAB, ZAC, ZAD, ZAE, ZAF, ZAG, ZAH, ZAJ, ZAK, ZAL	1
12	PAOZZ	4730012717978	78500	A-2206-V-1010	..TEE, TUBE UOC:ZAA, ZAB, ZAC, ZAD, ZAE, ZAF, ZAG, ZAH, ZAJ, ZAK, ZAL	1
13	PAOZZ	5330012721148	78500	2208-S-1033	..GASKET..... UOC:ZAA, ZAB, ZAC, ZAD, ZAE, ZAF, ZAG, ZAH, ZAJ, ZAK, ZAL	1
14	PAOZZ	3120012718353	78500	2245-H-1022	..BUSHING, SLEEVE UOC:ZAA, ZAB, ZAC, ZAD, ZAE, ZAF, ZAG, ZAH, ZAJ, ZAK, ZAL	1

Section II.

TM 9-2320-272-24P-1

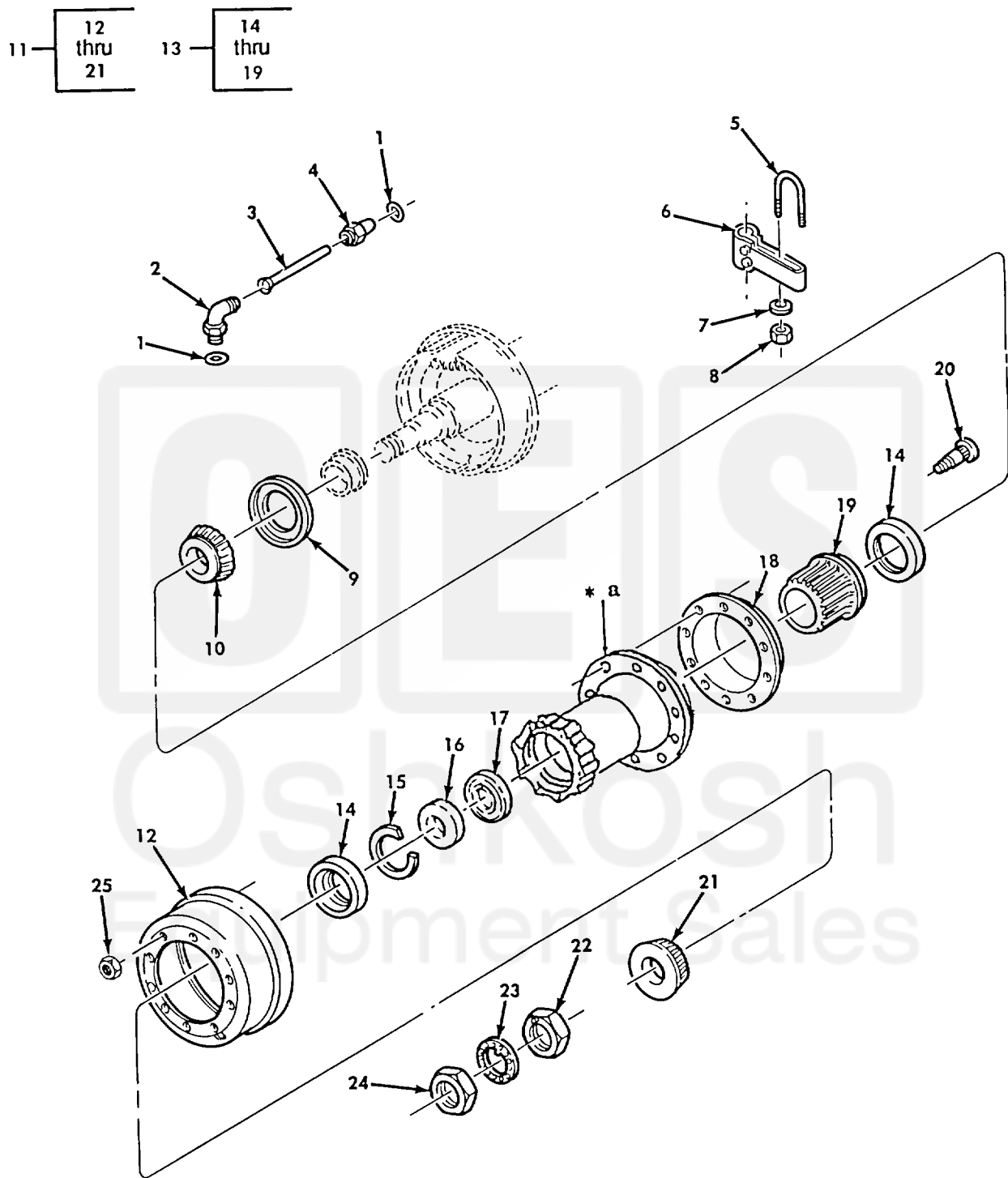


Figure 296. Rear Wheel Hub and Drum Assembly (M939A2).

SECTION II					TM 9-2320-272-24P-1	
(1)	(2)	(3)	(4)	(5)	(6)	(7)
ITEM NO	SMR CODE	NSN	CAGEC	PART NUMBER	DESCRIPTION AND USABLE ON CODES (UOC)	QTY
15	PAOZZ	5365012711837	78500	1229-A-3095	..RING, RETAINING UOC:ZAA, ZAB, ZAC, ZAD, ZAE, ZAF, ZAG, ZAH, ZAJ, ZAK, ZAL	1
16	PAOZZ	5330013080175	78500	A-1205-D-2162	..SEAL, PLAIN ENCASED UOC:ZAA, ZAB, ZAC, ZAD, ZAE, ZAF, ZAG, ZAH, ZAJ, ZAK, ZAL	2
17	PAOZZ	5330012721147	78500	A-1205-N-2120	..RETAINER, OIL SEAL UOC:ZAA, ZAB, ZAC, ZAD, ZAE, ZAF, ZAG, ZAH, ZAJ, ZAK, ZAL	2
18	PAOZZ	2530012853563	78500	3286-P-1056	..DEFLECTOR, DIRT AND UOC:ZAA, ZAB, ZAC, ZAD, ZAE, ZAF, ZAG, ZAH, ZAJ, ZAK, ZAL	2
19	PAOZZ	3120012718353	78500	2245-H-1022	..BUSHING, SLEEVE UOC:ZAA, ZAB, ZAC, ZAD, ZAE, ZAF, ZAG, ZAH, ZAJ, ZAK, ZAL	1
20	PAOZZ	5306012715842	78500	20X-1815-Z	.BOLT, RIBBED SHOULDE, LEFT HAND UOC:ZAA, ZAB, ZAC, ZAD, ZAE, ZAF, ZAG, ZAH, ZAJ, ZAK, ZAL	10
20	PAOZZ	5306012715843	78500	20X-1816-Z	.BOLT, RIBBED SHOULDE, RIGHT HAND UOC:ZAA, ZAB, ZAC, ZAD, ZAE, ZAF, ZAG, ZAH, ZAJ, ZAK, ZAL	10
21	PAOZZ	3110001000650	60038	598	.CONE AND ROLLERS, TA UOC:ZAA, ZAB, ZAC, ZAD, ZAE, ZAF, ZAG, ZAH, ZAJ, ZAK, ZAL	2
22	PAOZZ	5310012712467	78500	1227-D-1356	NUT, PLAIN, OCTAGON UOC:ZAA, ZAB, ZAC, ZAD, ZAE, ZAF, ZAG, ZAH, ZAJ, ZAK, ZAL	2
23	PAOZZ	5310003219974	78500	1229-U-1009	WASHER, KEY UOC:ZAA, ZAB, ZAC, ZAD, ZAE, ZAF, ZAG, ZAH, ZAJ, ZAK, ZAL	2
24	PAOZZ	5310012708425	78500	1227-E-1357	NUT, PLAIN, OCTAGON UOC:ZAA, ZAB, ZAC, ZAD, ZAE, ZAF, ZAG, ZAH, ZAJ, ZAK, ZAL	2
25	PAOZZ	5310013753107	2Y614	3A7313	NUT, PLAIN, HEXAGON, RIGHT HAND UOC:ZAA, ZAB, ZAC, ZAD, ZAE, ZAF, ZAG, ZAH, ZAJ, ZAK, ZAL	10
25	PAOZZ	5310002737771	78500	1199G111	NUT, PLAIN, SINGLE BA, LEFT HAND UOC:ZAA, ZAB, ZAC, ZAD, ZAE, ZAF, ZAG, ZAH, ZAJ, ZAK, ZAL	10

END OF FIGURE